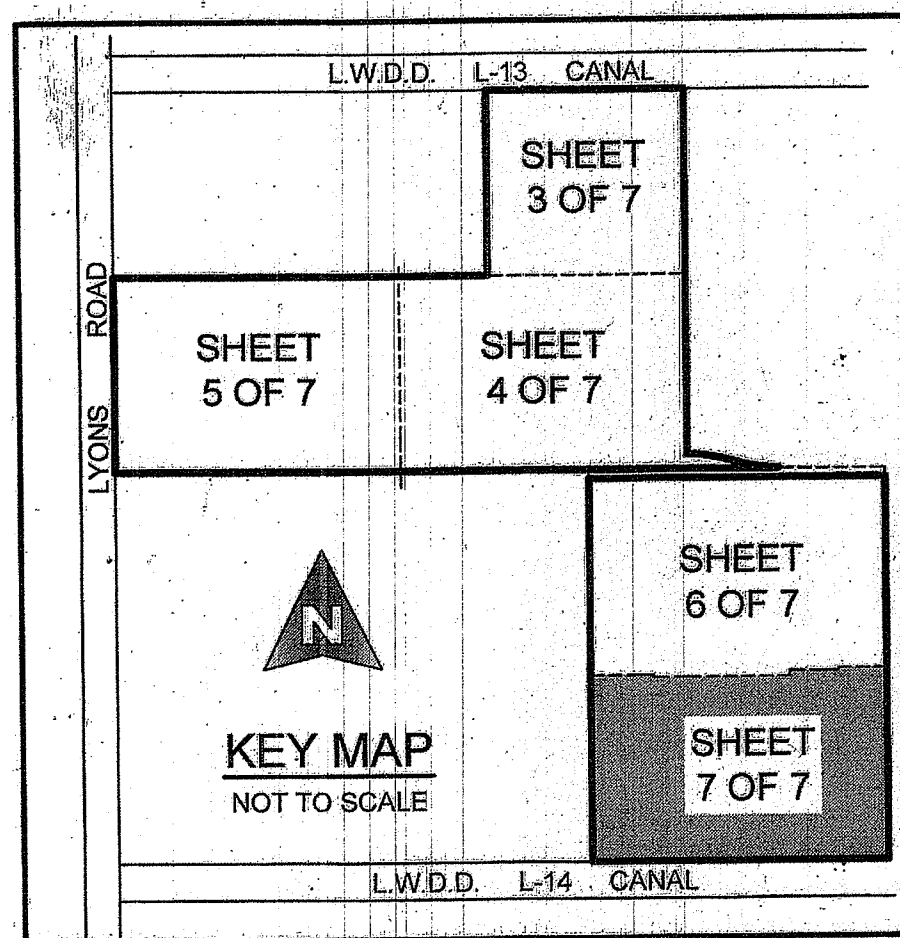
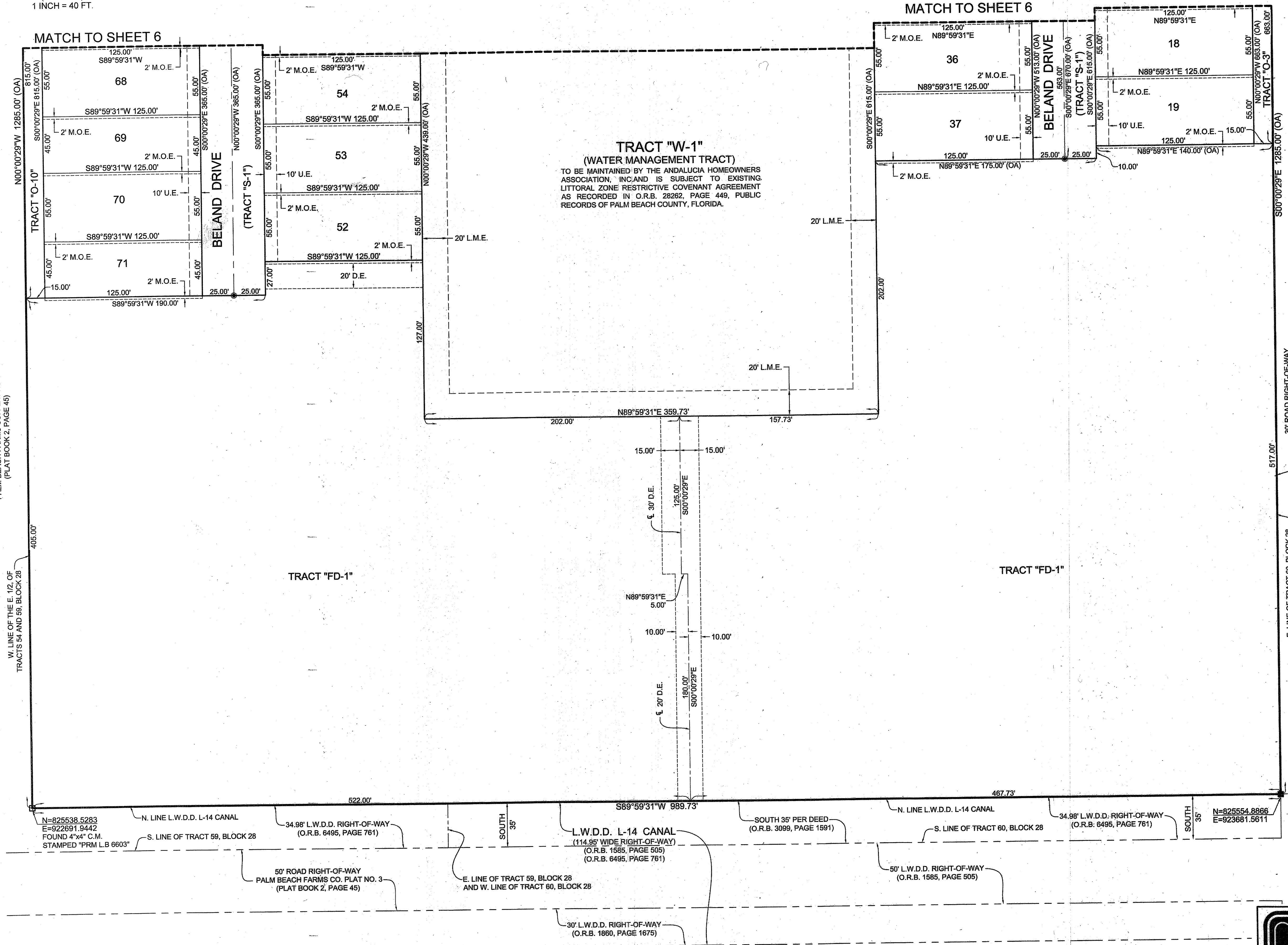
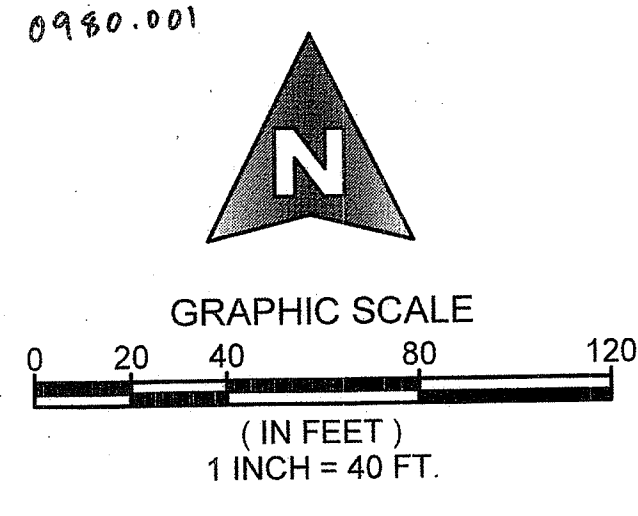


# ANDALUCIA PUD PLAT 1

LYING IN SECTIONS 29, 30 AND 32, TOWNSHIP 44 SOUTH, RANGE 42 EAST, PALM BEACH COUNTY, FLORIDA,  
BEING A REPLAT OF ALL OF TRACTS 42, 43 AND 53 AND A PORTION OF TRACTS 38, 41, 44, 54, 59 AND 60, BLOCK 28, THE PALM BEACH FARMS COMPANY  
PLAT NO. 3 AS RECORDED IN PLAT BOOK 2, PAGES 45 THROUGH 54, INCLUSIVE, PUBLIC RECORDS OF PALM BEACH COUNTY, FLORIDA.

# 199

COUNTY OF PALM BEACH )  
STATE OF FLORIDA ) SS  
THIS PLAT WAS FILED FOR RECORD AT )  
M. THIS ) DAY OF )  
RECORDED IN PLAT BOOK NO. )  
ON PAGE ) THRU )  
SHARON R. BOCK,  
CLERK AND COMPTROLLER  
BY: ) D.C.

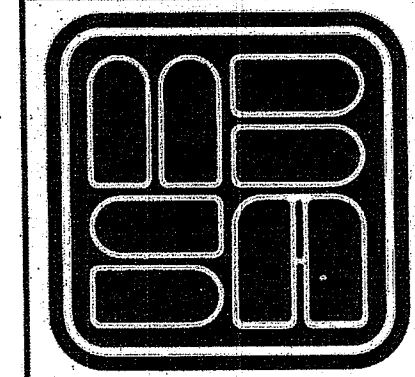


**COORDINATE NOTE:**  
STATE PLANE COORDINATES SHOWN ARE GRID DATUM, NAD 83 1990 ADJUSTMENT, FLORIDA EAST ZONE, COORDINATE SYSTEM 1983 STATE PLANE, TRANSVERSE MERCATOR PROJECTION.  
LINEAR UNIT = US SURVEY FEET  
ALL DISTANCES ARE GROUND  
SCALE FACTOR = 1.000022328  
GROUND DISTANCE X SCALE FACTOR = GRID DISTANCE  
S 00°00'29"E (PLAT BEARING) 100'56'20" COUNTER-CLOCKWISE ROTATION PLAT TO GRID  
S 00°58'49"E (GRID BEARING)  
THE EAST LINE OF TRACTS 38 AND 43, BLOCK 28, PALM BEACH FARMS COMPANY PLAT NO. 3 (PLAT BOOK 2, PAGES 45-54)

FD. P.B.C. BRASS DISK  
STAMPED "SUMMER"  
N = 830885.4090  
E = 924301.1320

FD. P.B.C. BRASS DISK  
STAMPED "SPR 35"  
N = 825792.6020  
E = 926621.3940

SHEET 7 OF 7



**MICHAEL B. SCHORAH & ASSOCIATES, INC.**  
1850 FOREST HILL BLVD., SUITE 208  
WEST PALM BEACH, FLORIDA 33409  
EB# 2438 TEL. (561) 968-0060 FAX. (561) 942-9726 LB# 2438

ANDALUCIA PUD PLAT 1